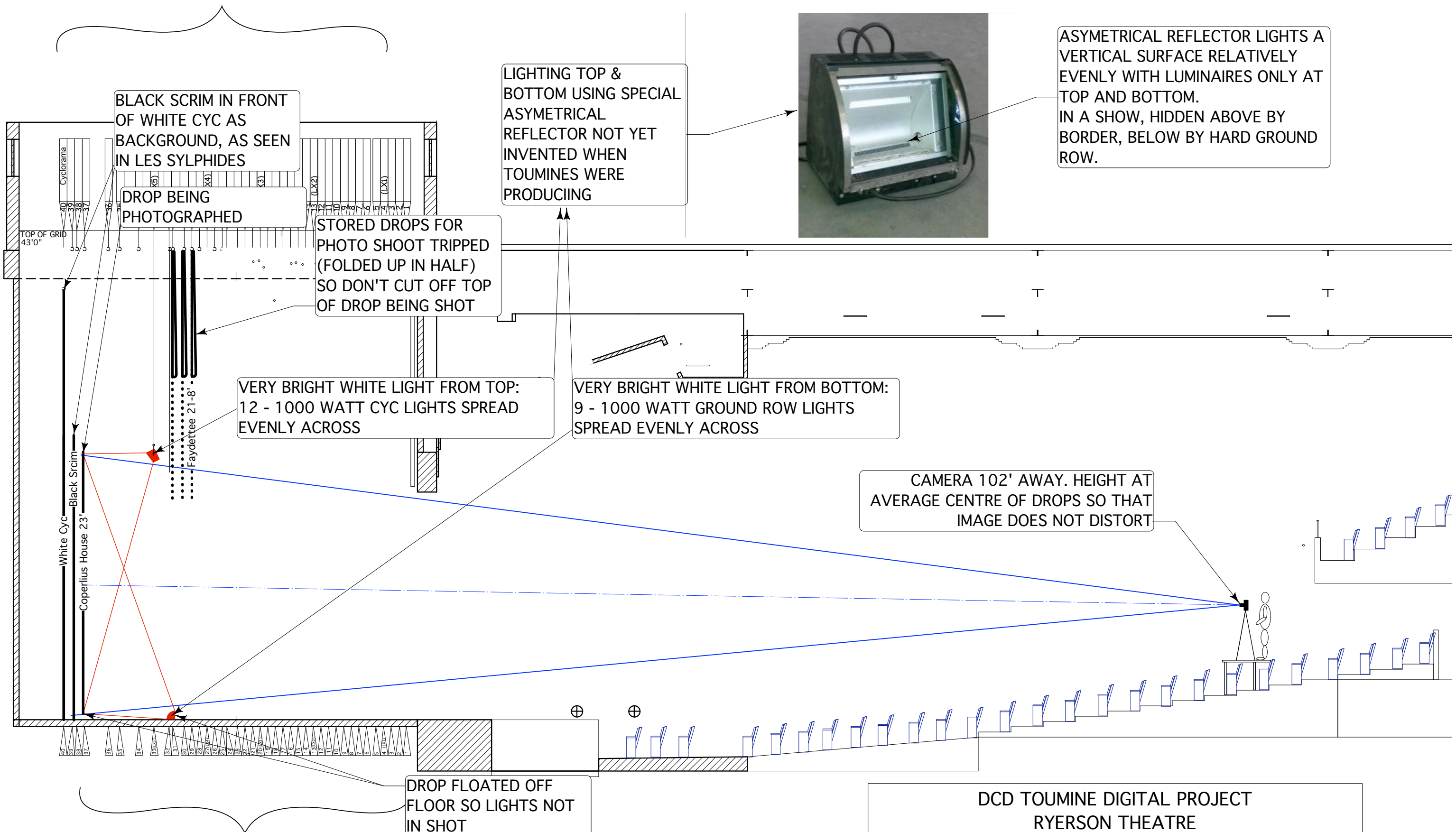


STAGE AND FLY TOWER



BLACK SCRIM IN FRONT OF WHITE CYC AS BACKGROUND, AS SEEN IN LES SYLPHIDES

DROP BEING PHOTOGRAPHED

STORED DROPS FOR PHOTO SHOOT TRIPPED (FOLDED UP IN HALF) SO DON'T CUT OFF TOP OF DROP BEING SHOT

VERY BRIGHT WHITE LIGHT FROM TOP: 12 - 1000 WATT CYC LIGHTS SPREAD EVENLY ACROSS

VERY BRIGHT WHITE LIGHT FROM BOTTOM: 9 - 1000 WATT GROUND ROW LIGHTS SPREAD EVENLY ACROSS

CAMERA 102' AWAY. HEIGHT AT AVERAGE CENTRE OF DROPS SO THAT IMAGE DOES NOT DISTORT

DROP FLOATED OFF FLOOR SO LIGHTS NOT IN SHOT

LIGHTING TOP & BOTTOM USING SPECIAL ASYMETRICAL REFLECTOR NOT YET INVENTED WHEN TOUMINES WERE PRODUCING



ASYMETRICAL REFLECTOR LIGHTS A VERTICAL SURFACE RELATIVELY EVENLY WITH LUMINAIRES ONLY AT TOP AND BOTTOM. IN A SHOW, HIDDEN ABOVE BY BORDER, BELOW BY HARD GROUND ROW.

STAGE AND FLY TOWER

DCD TOUMINE DIGITAL PROJECT  
 RYERSON THEATRE  
 SECTION: CAMERA, DROPS, & LIGHTING COORDINATION  
 1/8" = 1'-0" 2012 to 2016 S.DOLGOY